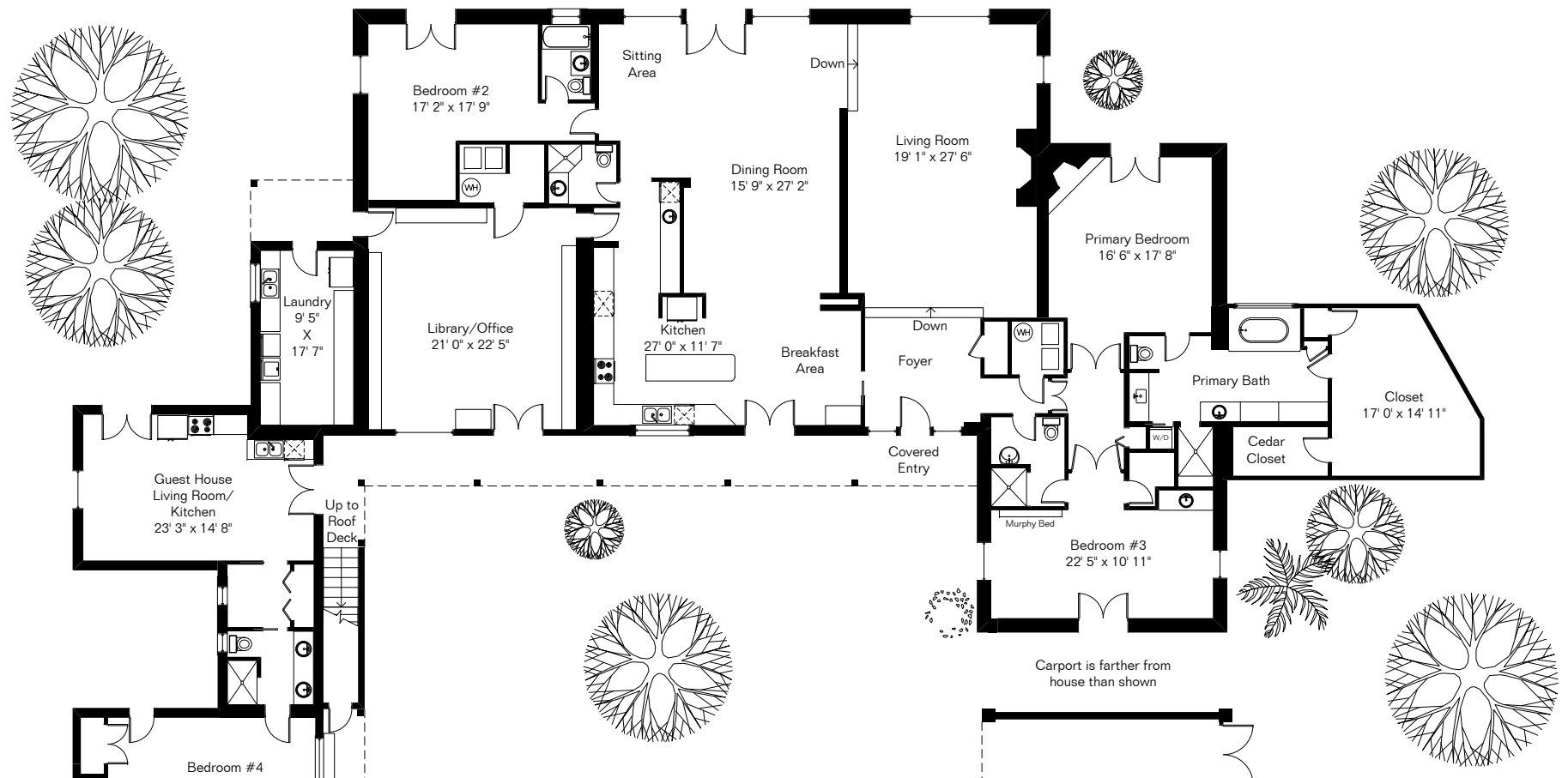


2850 N Santa Ynez Place

The square footages and room size information are deemed to be reliable but are not guaranteed and should be independently verified. This drawing is for marketing purposes only.

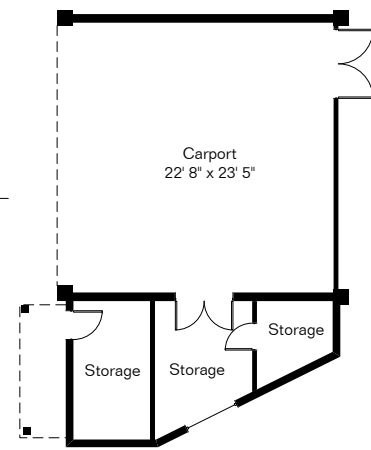
Pool Area



Carport is farther from house than shown

Living Area Main House 4,714 Sq Ft
 Guest House 893 Sq Ft

 Total Living Area 5,607 Sq Ft
 Carport 589 Sq Ft
 Storage 258 Sq Ft



Site Visit February 2025



Copyright 2025 Floor Plans First! LLC
 All Rights Reserved.